

# ENDLESS ROD™

INCREASE YOUR  
OPERATION EFFICIENCY

## VERSATILE TRANSPORT

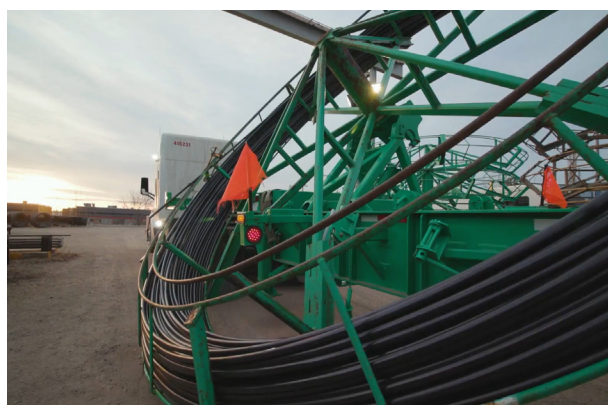
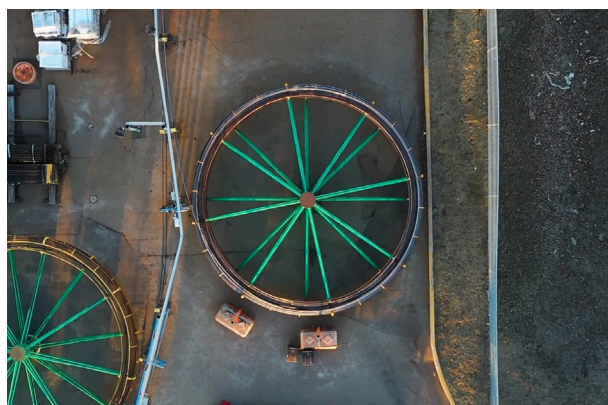
Lifting Solutions Endless Rod continuous sucker rod is manufactured to precise specifications using state-of-the-art technology, superior processes, and the highest quality material. The result is a premium continuous sucker rod—one uniform diameter with only two connections—that is suitable for a multitude of well conditions in RRP and PCP applications.

## FEATURES AND BENEFITS

- Reduce overall intervention frequency over the life cycle of your well
- Lower production costs by increasing pump life and reducing energy usage
- Decrease tubing wear and rod break related interventions
- Minimize pressure losses around couplings by increasing annular space
- Lower string weight
- Reduce power and equipment requirements and use smaller pumping units at surface
- Increase service efficiency
- Reduce bridging of solids with a constant velocity of fluid and solids in the tubing
- Run larger-size rods in smaller diameter tubing

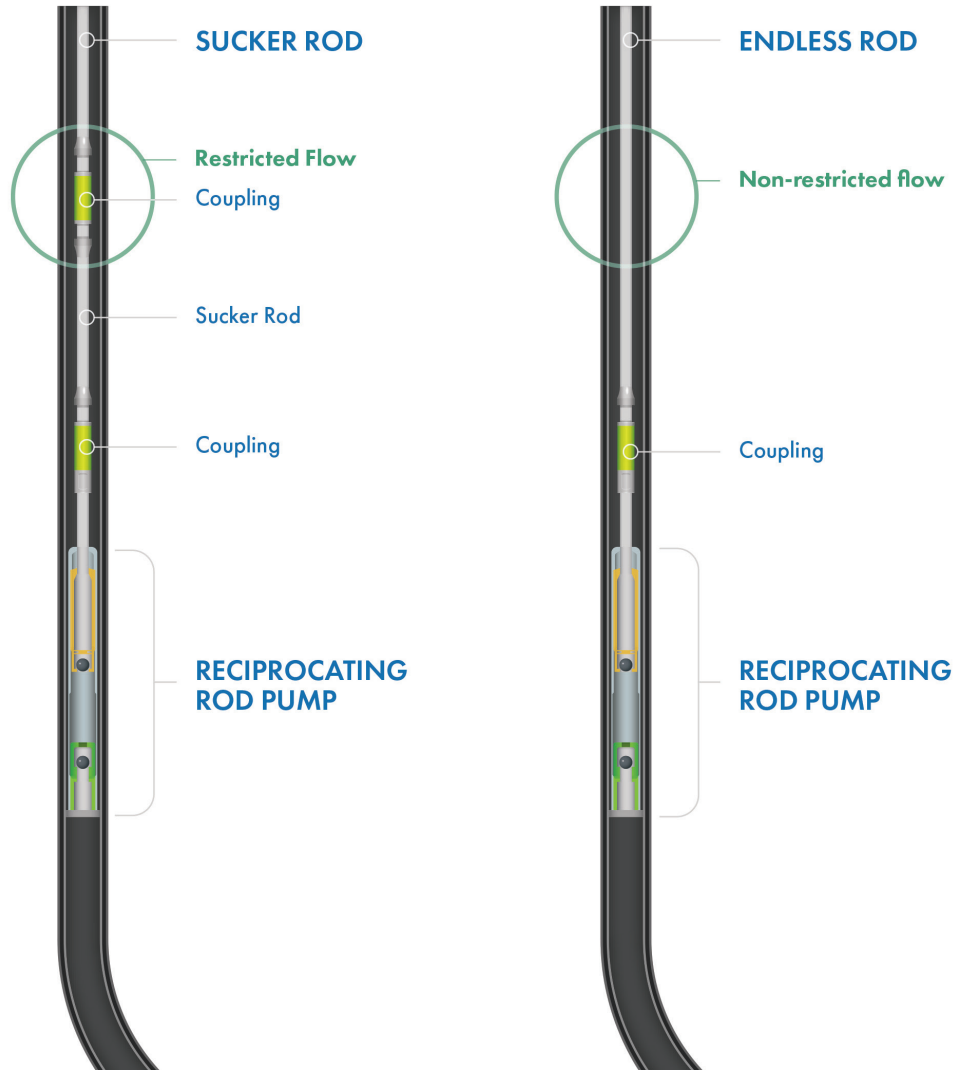
## SIZES

Endless Rod is available in the same metallurgies and sizes as conventional rod. Product selection is based on load requirements and fluid properties to best suit the application.



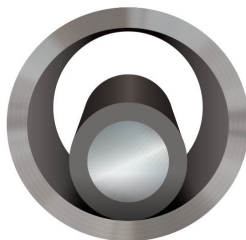


## SUCKER ROD VS ENDLESS ROD WITH RRP



## CROSS SECTIONS

### SUCKER ROD



### ENDLESS ROD

