

ENDLESS ROD™

INCREASE YOUR
OPERATION EFFICIENCY

VERSATILE TRANSPORT

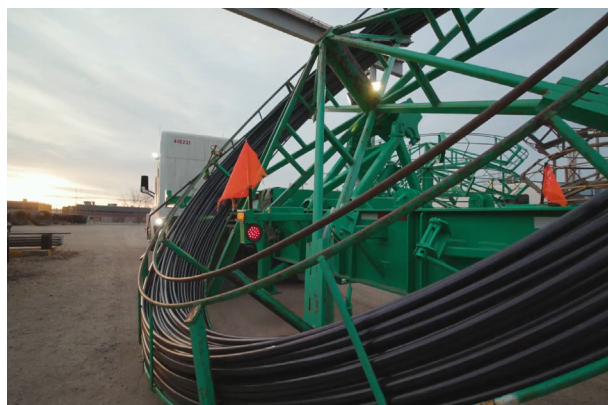
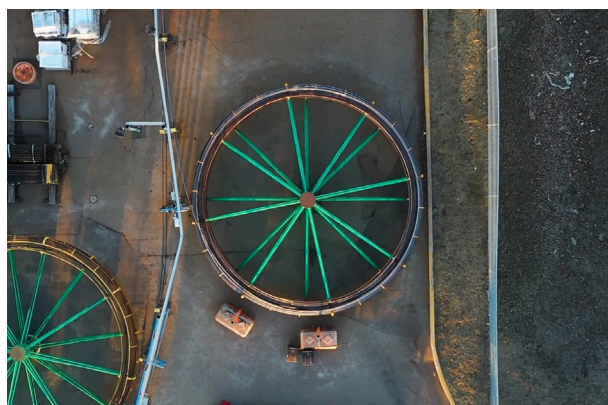
Lifting Solutions Endless Rod continuous sucker rod is manufactured to precise specifications using state-of-the-art technology, superior processes, and the highest quality material. The result is a premium continuous sucker rod—one uniform diameter with only two connections—that is suitable for a multitude of well conditions in RRP and PCP applications.

FEATURES AND BENEFITS

- Reduce overall intervention frequency over the life cycle of your well
- Lower production costs by increasing pump life and reducing energy usage
- Decrease tubing wear and rod break related interventions
- Minimize pressure losses around couplings by increasing annular space
- Lower string weight
- Reduce power and equipment requirements and use smaller pumping units at surface
- Increase service efficiency
- Reduce bridging of solids with a constant velocity of fluid and solids in the tubing
- Run larger-size rods in smaller diameter tubing

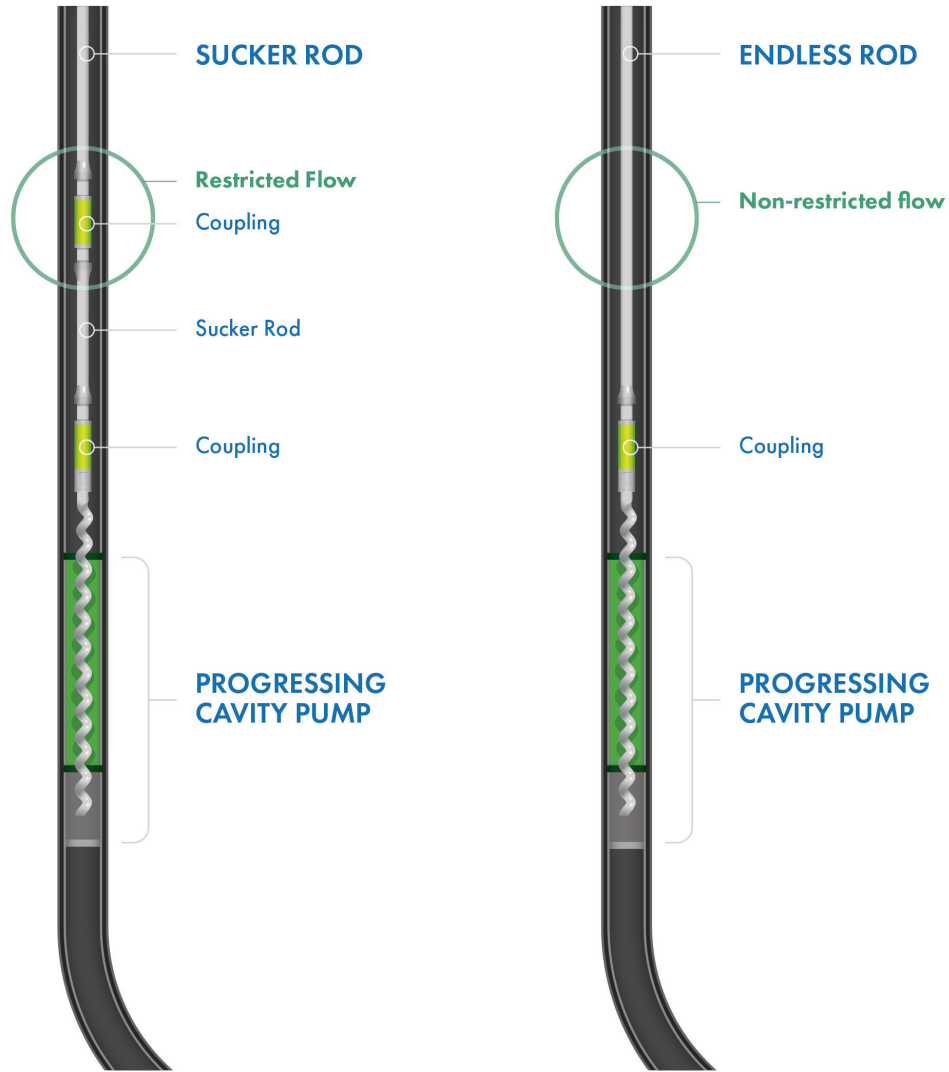
SIZES

Endless Rod is available in the same metallurgies and sizes as conventional rod. Product selection is based on load requirements and fluid properties to best suit the application.



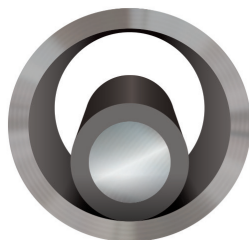


SUCKER ROD VS ENDLESS ROD WITH PCP



CROSS SECTIONS

SUCKER ROD



ENDLESS ROD

